



# inReach if Needed

How Remote Communications Aid in Self-Rescue,  
SAR Protocol and Resource Deployment

Brett Wagenheim  
inReach Professional Sales

**GARMIN**  
®

## Values of Remote Communications

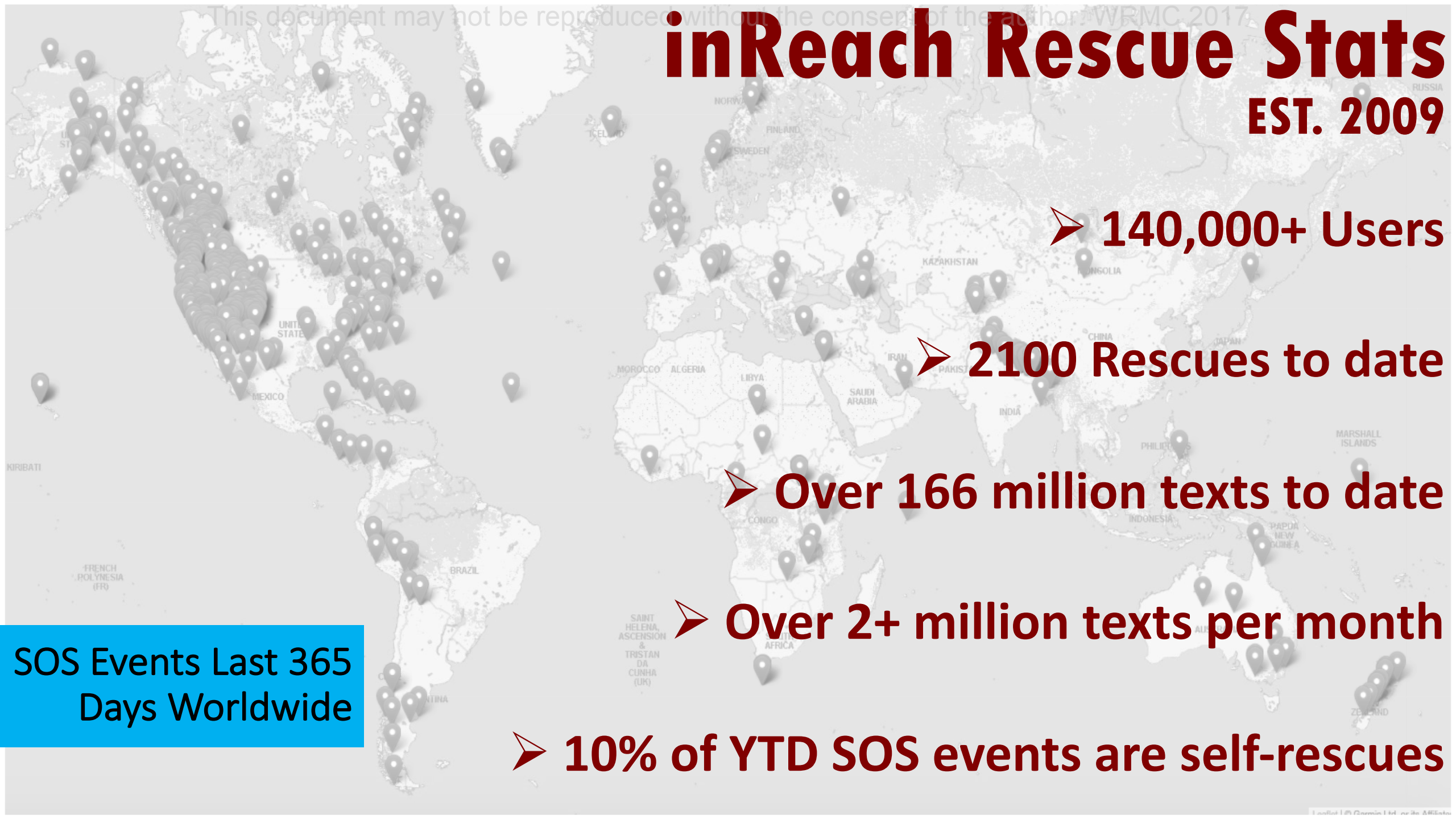
- Information Relay
- Logistic Coordination
- Incident Management
- Control Expectations

The biggest thing is being able to communicate ..to tell your situation and get a different perspective on what you CAN do...Assessing more objectively is key to self-rescue

—Chris Korbolic

# inReach Rescue Stats

EST. 2009



➤ **140,000+ Users**

➤ **2100 Rescues to date**

➤ **Over 166 million texts to date**

➤ **Over 2+ million texts per month**

➤ **10% of YTD SOS events are self-rescues**

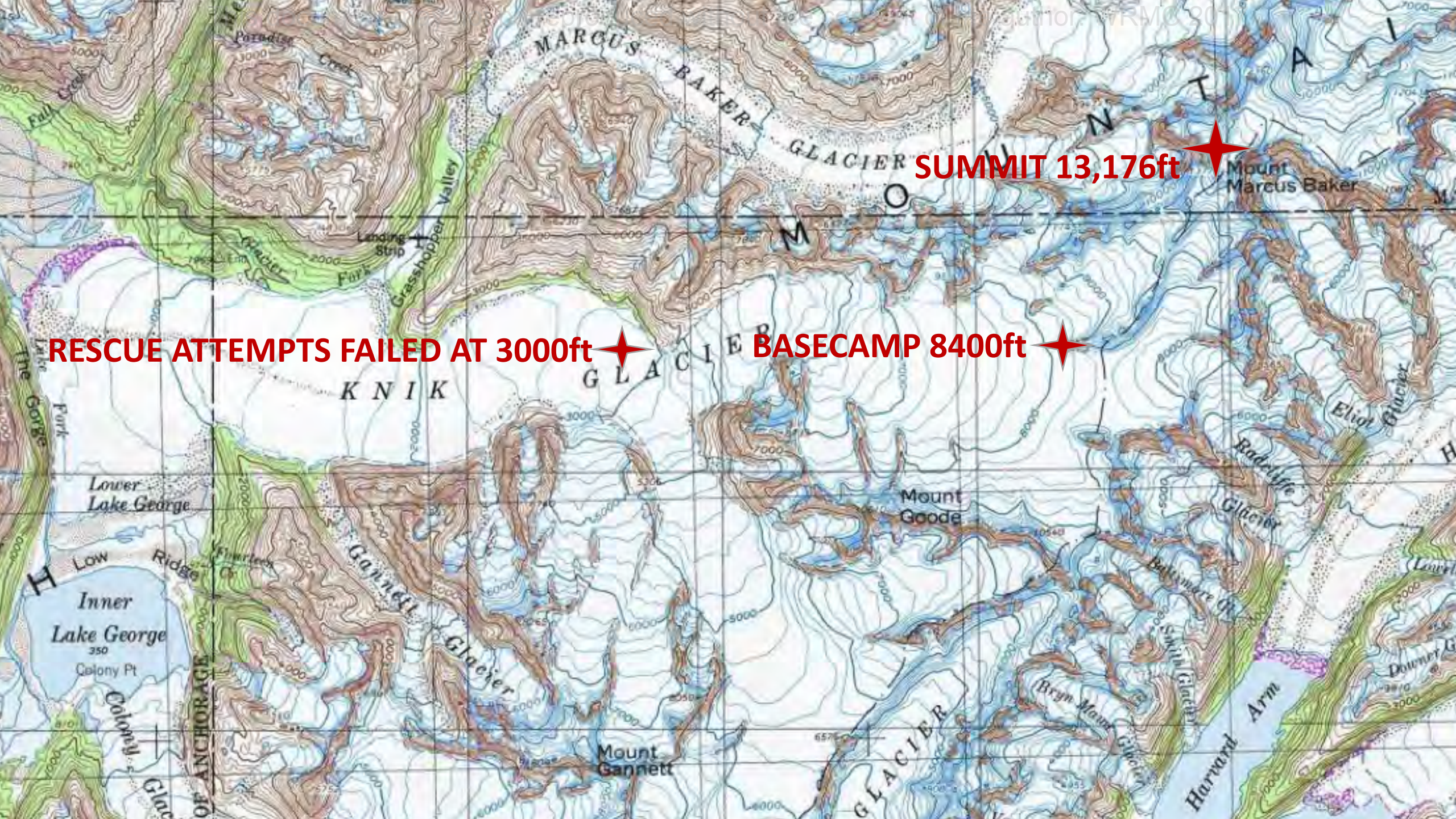
**SOS Events Last 365 Days Worldwide**

# inReach SOS Case Study 1

## Mt. Marcus Baker Ascent via Knik Glacier Route

- Friday, April 3<sup>RD</sup> climbers depart
- Weather shifts and storm arrives Day 2
- Tuesday, June 7<sup>th</sup> inReach SOS triggered
- 4 supply caches and rescue attempts fail over 72 hours of incident management
- Friday, June 10<sup>th</sup> successful rescue of all 3 climbers, transport to Anchorage's Providence Medical Center





**SUMMIT 13,176ft**



**RESCUE ATTEMPTS FAILED AT 3000ft**



**BASECAMP 8400ft**



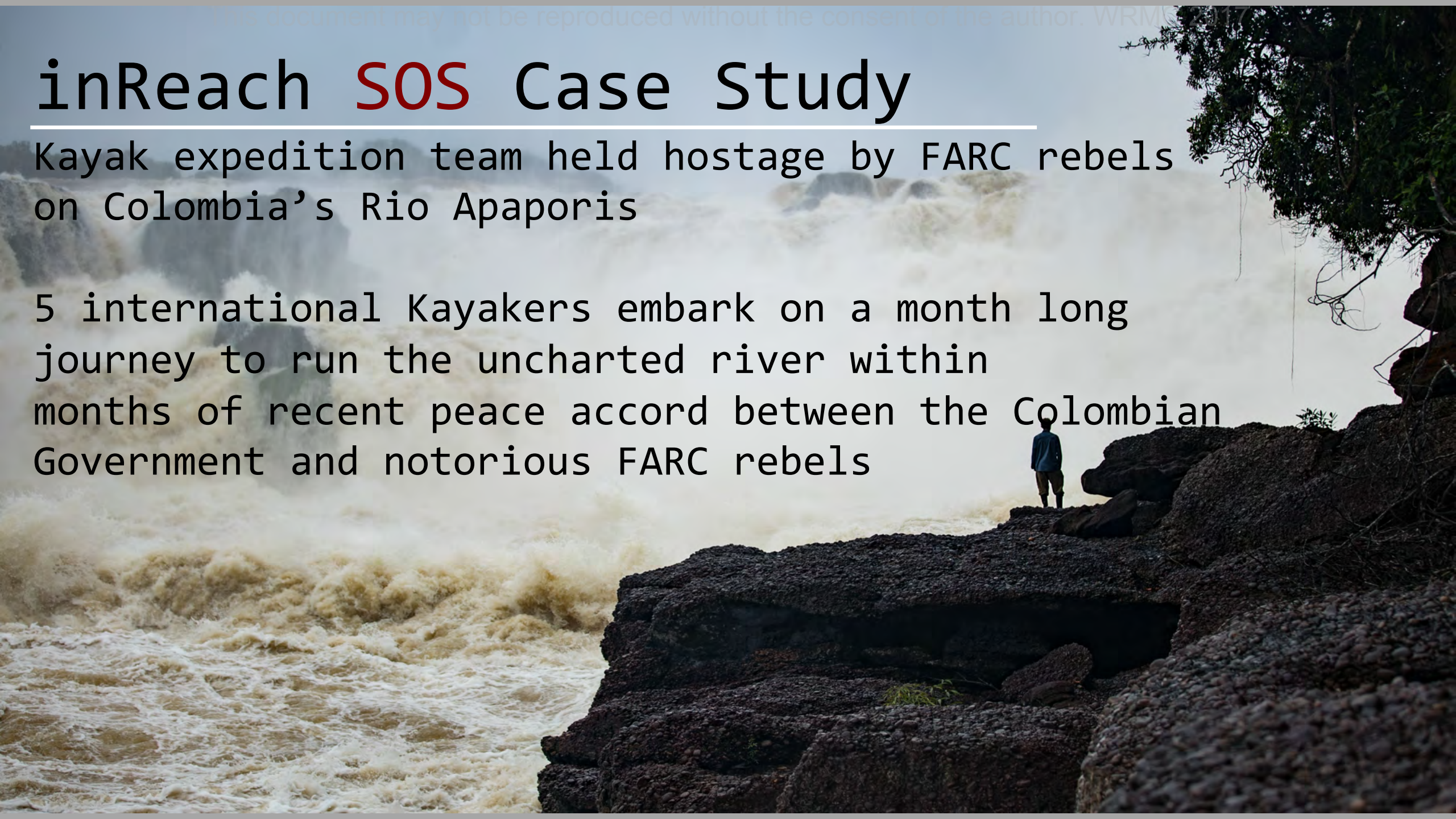


# inReach **SOS** Case Study

---

Kayak expedition team held hostage by FARC rebels on Colombia's Rio Apaporis

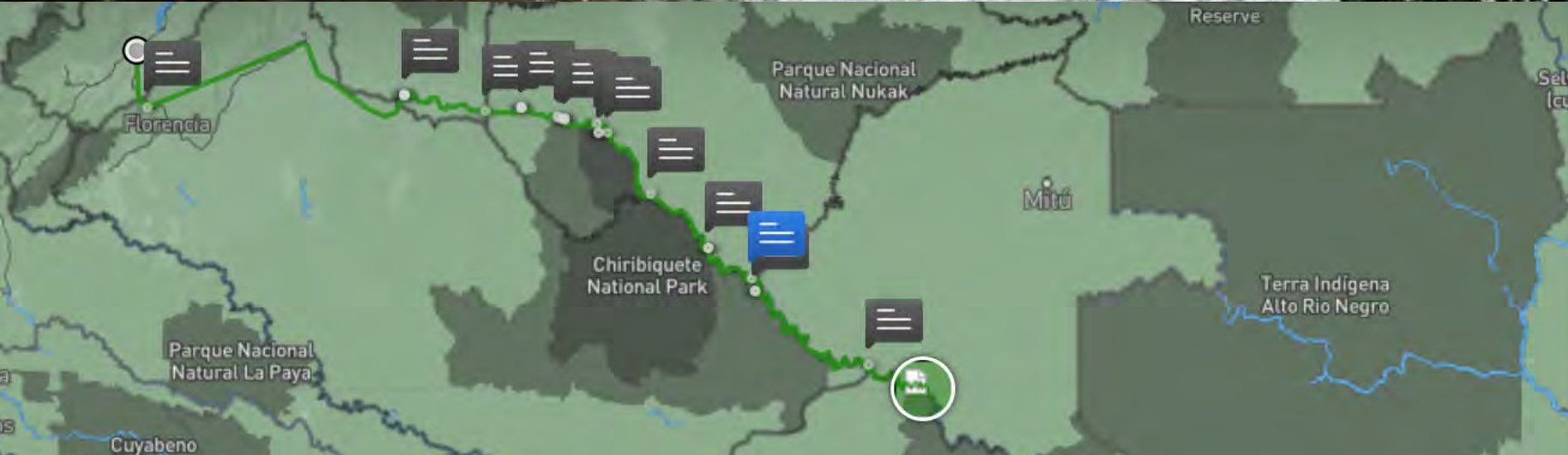
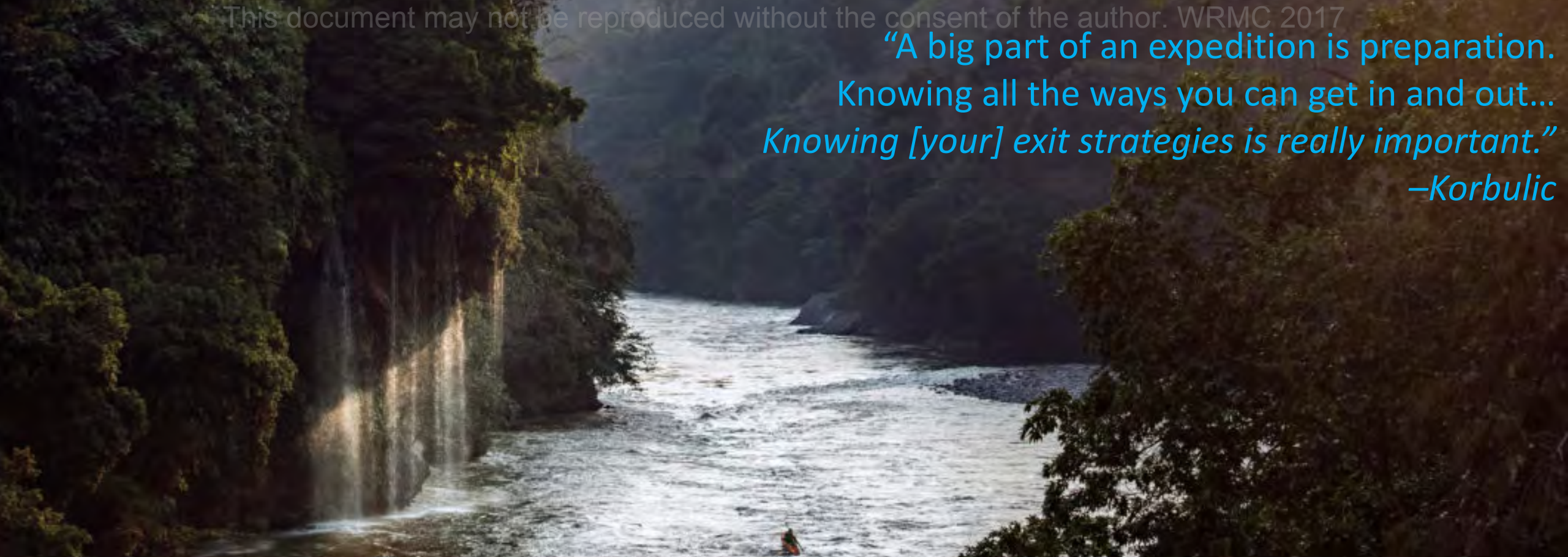
5 international Kayakers embark on a month long journey to run the uncharted river within months of recent peace accord between the Colombian Government and notorious FARC rebels





“A big part of an expedition is preparation.  
Knowing all the ways you can get in and out...  
*Knowing [your] exit strategies is really important.*”

—Korbolic



**chriskorbolic**

fri apr 14 2017 :: 07:28am



lat 0.6652 lon -72.0335

Food resupply success. Simple goods but just what we need. Now getting into Amazon vortex of peoples and communities who call this place home.



Those mental breakdowns can turn into bigger issues [and] bigger mistakes...spiraling into more grave situations. I've definitely seen the beginnings of those [situations] - Korbulic





JACOBO ARENAS  
FARC-EP  
50 AÑOS DE LUCHA  
POR DEMOCRACIA, PAZ Y SOBERANÍA  
PCCC

SANDRA MENDOZA  
JORGE BRICEÑO  
FARC-EP

As much as you try to separate yourself and look at your situation objectively,



if you feel stuck somewhere, you can't mentally escape that...

– Korbolic



I guess the idea of self-rescue [is] assessing your situation and separating yourself from it...And slowing things down and looking at the bigger picture objectively - Korbulic



# Having the ability to communicate...when everything went wrong, literally kept us sane

- Critical Information Relay and Logistics Coordination
  - Location ID & Tracking
  - Weather updates
  - Medical Advice
  - Transport/Itinerary changes
- Incident Communication
  - Coordinate resource drops/resupplies
  - Gauge urgency and resource type required for response
  - Provide victims' with updates and counsel
- Manage Expectations for involved parties
  - Create communication schedule and protocol
  - Provide support and hope in deteriorating conditions



**QUESTIONS  
COMMENTS  
STORIES?**

**GARMIN<sup>®</sup>**